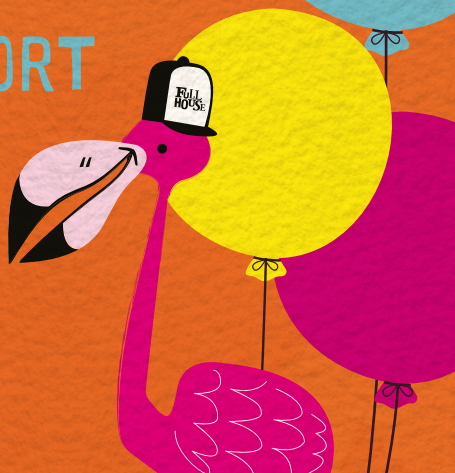


FULL HOUSE THEATRE

ANNUAL REPORT

2016-2017



FROM OUR CHAIR

AS YOU WILL SEE IT HAS BEEN ANOTHER JAM-PACKED YEAR FOR **FULL HOUSE THEATRE** WITH LOTS OF ACTIVITY FOR **CHILDREN**, **YOUNG PEOPLE** & **FAMILIES** ACROSS **BEDFORDSHIRE & BEYOND!** WE DELVED INTO THE LAND OF SOAP OPERAS FOR OUR **CHILDREN IN NEED** FUNDED PROJECT, **THE SECRET STORIES OF HADDOCK FARM**, A NEW & EXCITING VENTURE FOR US! THIS WAS FOLLOWED BY OUR **FABULOUS FESTIVAL**, LUTON'S **FULL HOUSE FEB FEST** — A FAVOURITE IN THE TEAM'S CALENDAR AND A BIG HIT WITH OUR AUDIENCES.



PHOTO CREDITS THROUGHOUT ARE
©SHAUN ARMSTRONG/MUBSTA.COM
UNLESS STATED OTHERWISE



AS WE'VE ENJOYED RUNNING **FEB FEST** FOR SEVERAL YEARS, WE DECIDED TO LAUNCH OUR FIRST EVER **JUNE ARTS JAM** — A FAMILY & SCHOOLS' THEATRE FESTIVAL ACROSS BEDFORD BOROUGH.

WE ALSO HAD THE OPPORTUNITY TO REWORK TWO OF OUR PIECES FOR SCHOOLS AUDIENCES AS WELL AS **ART TOWN** CONTINUING TO **THRIVE** THROUGHOUT THE YEAR. WE ROUNDED THE YEAR OFF WITH OUR FABULOUS CHRISTMAS ROMP **THE NIGHT BEFORE CHRISTMAS!**

ALL THIS **AMAZING** ACTIVITY HAS BEEN SUPPORTED BY OUR WONDERFUL TEAM OF CREATIVES & **OFFICE STAFF!**

- PROFESSOR SALLY MACKEY

OUR **VISION**
FOR EVERY CHILD TO HOLD
TREASURED MEMORIES OF
THEATRE.

&

OUR **MISSION** WITH OUR AUDIENCE
AT THE HEART OF OUR WORK WE CAREFULLY CRAFT, PROGRAMME AND
DEVELOP THEATRE AND PERFORMANCE PROJECTS FOR, BY AND WITH
CHILDREN AND YOUNG PEOPLE.

WE EXIST TO ENRICH YOUNG **CREATIVE** MINDS, DELIGHT
YOUNG **AUDIENCES**, AND NURTURE A LIFELONG
CONNECTION WITH THE ARTS.

FULL HOUSE IS COMMITTED TO **LISTENING** AND
RESPONDING TO THE **NEEDS** OF OUR AUDIENCE, REACHING OUT
TO ALL CORNERS OF THE **COMMUNITY** TO CREATE LASTING
MEMORIES.



2,076 PEOPLE ATTENDED AN
EVENT AT THE FESTIVAL

NOW IN ITS THIRD YEAR, **FEB FEST** TOOK
PLACE IN VENUES AND COMMUNITY SETTINGS IN
LUTON, INCLUDING THE HAT FACTORY, LUTON
LIBRARY THEATRE AND LUTON LIBRARIES.

7 PROGRAMMED EVENTS INCLUDING
BOY MEETS GIRL BY ZEST THEATRE,
THE SNOW CHILD BY TUTTI FRUTTI,
PUSS IN BOOTS BY LINGO THEATRE
AND THE TAP DANCING MERMAID BY
TESSA BIDE.

©SIMON MARSHALL PHOTOGRAPHY



©ALEX BRENNER PHOTOGRAPHY



OVER **500** PEOPLE ATTENDED
THE IMAGINATION STATION FOR
FREE STORYTELLING, DANCE, DRAMA,
ART AND CRAFT ACTIVITIES.



THE **SECRET** STORIES OF HADDOCK FARM

FUNDED BY **CHILDREN IN NEED** & IN PARTNERSHIP WITH **BEDFORD & DISTRICT CEREBRAL PALSY SOCIETY** (BDCPS) WE WORKED WITH **9 YOUNG PEOPLE** TO CREATE A NEW ONLINE SOAP OPERA. THE **YOUNG PEOPLE** BEGAN THE PROJECT WITH A RESIDENCY TO **DEVELOP** THEIR **IDEAS** FOR THE SOAP, INCLUDING **CHARACTERS, STORYLINES** & THE TITLE. THE GROUP THEN WORKED OVER SEVERAL WEEKS, PRODUCING AN EPISODE A WEEK TO BE SHARED ONLINE VIA **VIMEO** AND A DEDICATED **FACEBOOK** PAGE.

66

'loving the last episode! We thought karnel did a fantastic job of getting into character in this episode, acting coming through (less giggling and smiling!) I am blown away by Jonny and how his confidence has grown, considering he could barely face the camera at the start! I really feel he has put so much into this experience. And Jamie I — what a debut!!'

Rose McHugh, BDCPS

99

THE SOAP HAS BEEN VIEWED OVER **1,000** TIMES & IS STILL LIVE FOR PEOPLE TO DISCOVER!

ALL OF THE PARTICIPANTS ACHIEVED AN **ARTS AWARD**, WITH **3 DISCOVER**, **5 BRONZE** & **1 SILVER** AWARD ACHIEVED!



© BBC 2007 Reg. charity England & Wales no. 802052 and Scotland no. SC039557

IN **2016** WE PILOTED A NEW FESTIVAL IN **BEDFORD**. ACTIVITIES TOOK PLACE THROUGHOUT JUNE, WITH PERFORMANCES AND WORKSHOPS FOR SCHOOLS AND PUBLIC AUDIENCES.

EXCITING
AMAZEBALLS
GREAT
MUSICAL
COOL
FANTASTIC
WONDERFUL
NICE
EXCELLENT
FASCINATING
INCREDIBLE
EXPLORING
LISTENING

ACTIVITIES TOOK PLACE AT QUEENS PARK COMMUNITY CENTRE, THE HIGGINS, JOHN BUNYAN MUSEUM, THE PLACE THEATRE, KEMPSTON LIBRARY AND BEDFORD CENTRAL LIBRARY.



©CLARA LIBERA



EVENTS INCLUDED EAR TRUMPET BY GOBBLEDEGOOK, A BOY AND A BEAR IN A BOAT BY SPARK ARTS, A MANO BY EL PATIO TEATRO, THE ELVES AND THE SHOEMAKER BY THEATRE OF WIDDERSHINS AND OUR OWN PRODUCTION, PULPITS AND PRISON DOORS.



©FULL HOUSE THEATRE

A LITTLE TO THE LEFT OF CENTRE: THEATRE IN EDUCATION

FUNDED BY **BEDFORDSHIRE** POLICE & CRIME COMMISSIONER GRANT FUND, THIS PIECE FOCUSING ON **ANTISOCIAL** BEHAVIOUR, **BULLYING**, **HOMOPHOBIA**, **RACISM**, AND **CYBER-BULLYING**, TOURED FOR THE THIRD TIME IN 2016.

"EXCELLENT
PLAY - REALLY
IMPACTED
STUDENTS'
AWARENESS".

TEACHER QUOTES

"REALLY
ENJOYABLE
AND STUDENTS
WERE ENGAGED
THROUGHOUT".

"BRILLIANT PLAY,
WITH LOTS OF
GOOD PARTS, VERY
ENGAGING"

"GREAT
PERFORMANCE.
WELL PITCHED AND
ENGAGING".

©FULL HOUSE THEATRE

19 PERFORMANCES
& WORKSHOPS

14 SCHOOLS ACROSS
BEDFORDSHIRE

3031 YOUNG
PEOPLE SAW IT

THE BRAVEST MOUSE



WE REACHED AN AUDIENCE OF **1,050** OVER A TOTAL OF **16 PERFORMANCES** ACROSS BEDFORDSHIRE.

THE REVIVED PRODUCTION INCLUDED **2 ACTORS** AND A LIVE **MUSICIAN** AS PART OF THE TEAM, OFFERING A NEW DEPTH TO THE WORK.

OUR POIGNANT AND TOUCHING PIECE OF **THEATRE** FOR CHILDREN AGED 4-9 YEARS, WAS FURTHER DEVELOPED AND TOURED TO 6 SCHOOLS ACROSS BEDFORDSHIRE AND **7** COMMUNITY SPACES ACROSS LUTON. THIS WAS WITH SUPPORT FROM **SPARK ARTS** IN LEICESTER.

"The show was very interesting in terms of style and presentation. The musical elements were very accomplished and I think stylistically I had not seen this before on a small scale...I think [Full House] may have fallen on a formula that is rich in potential with this type of musical drama for young audiences".

ADEL AL-SALOUM, SPARK ARTS

EXCITING
DIFFERENT
BRILLIANT
GREAT
FANTASTIC
BIG
EMOTIVE
WONDERFUL
CAPTIVATING
BEST
ENJOYABLE
MARVELLOUS
EPIC
POWERFUL
BEAUTIFUL
INCREDIBLE
AMAZING
FUN
AWESOME
ABSORBED



HOUGHTON REGIS ART TOWN

OUR ARTS DEVELOPMENT PROJECT HAS BEEN GOING FROM STRENGTH TO **STRENGTH** WITH A WHOLE HOST OF ACTIVITY INCLUDING REGULAR SESSIONS FOR ARTS **STARTERS** AND ARTS **LEADERS**, A TOUR OF THE LOST LEGENDS OF THE LIBRARY BY ART TOWN YOUNG COMPANY, A PERFORMANCE OF **A BOY AND A BEAR IN A BOAT** BY SPARK ARTS AT THE LIBRARY AND A PERFORMANCE OF **THE BRAVEST MOUSE**.



©FULL HOUSE THEATRE



©FULL HOUSE THEATRE



©FULL HOUSE THEATRE



©FULL HOUSE THEATRE



OVER **400 CHILDREN** TOOK PART IN ACTIVITY THROUGH THE ART TOWN PROJECT THIS YEAR.

THE **ARTS STARTERS** ALSO TOOK PART IN HOUGHTON REGIS CARNIVAL, WINNING THE BEST DRESSED WALKER WITH THEIR FANTASTIC **PEACOCK** PUPPET!

32 ART STARTERS
& **14** ART LEADERS

17 PARTICIPANTS
ACHIEVED AN ARTS AWARD

5 EVENTS ACROSS
THE YEAR

THE NIGHT BEFORE CHRISTMAS

COMMISSIONED BY **LUTON CULTURE** FOR THE 6TH YEAR, WE CREATED A NEW PIECE OF FAMILY THEATRE FOR LUTON LIBRARY THEATRE.

OVER **22 PERFORMANCES**, WE REACHED **4,463 PEOPLE** WITH A MIXTURE OF SCHOOLS AND PUBLIC PERFORMANCES.



“It was really captivating. My five year old was laughing out loud. I knew and enjoyed the poem before we attended the performance, one of my reasons for booking when tickets became available. However, also being a Research Scientist, I wanted to congratulate the writers on how fantastically they had weaved the dialogue and story into the poem. It was incredibly clever and well done.”

TO **PROMOTE** THE PIECE WE DEVELOPED A SCIENCE INSPIRED **LIVE ART** INSTALLATION LABORATORY FOR **THE SECRET SOCIETY OF SANTA HUNTERS**. A FURTHER **1354** CHILDREN AND THEIR FAMILIES TOOK PART IN THIS, MEETING THE SCIENTISTS!



OTHER ACTIVITY:

DURING **2016/17**, WE WERE CHOSEN TO BE AN **ARTS AWARD** GOOD PRACTICE CENTRE, SHARING OUR **KNOWLEDGE** AND **SUCCESS** AT DELIVERING ARTS AWARD **LOCALLY** AT ALL LEVELS.

CREATIVE DIRECTOR **BEN MILES** TOOK PART IN THE INTENSIVE **MARKETING** PROGRAMME CULTURE HIVE, TO **SUPPORT** SMALLER ARTS **ORGANISATIONS** WHICH HAS LED TO OUR WONDERFUL REBRANDING AND CEMENTING WHAT IT IS WE DO. THIS HAS LED TO US REDEFINING WHAT WE DO, WITH A NEW VISION AND MISSION STATEMENT.

WE WERE PART OF SEVERAL **STRATEGIC** GROUPS LOCALLY SUPPORTING THE DEVELOPMENT OF THE ARTS INCLUDING **BEDFORD** BOROUGH'S LOCAL CULTURAL EDUCATION PARTNERSHIP AND THE CREATIVE HUB IN **LUTON**, SUPPORTING THE **DEVELOPMENT** OF LUTON'S CPP PROJECT.

INCOME

MONEY WE EARNED £19,989

COMMISSIONS £48,960

GRANTS £328,972

TOTAL **£397,921**

FINANCE

FROM OUR
GENEROUS
FUNDERS



EXPENDITURE

MAKING OUR WORK £83,036

TOURING OUR WORK £35,137

MARKETING OUR WORK £40,916

RUNNING THE COMPANY £64,094

RAISING FUNDS £8,398

TOTAL **£231,581**

WE HAVE BEEN GENEROUSLY SUPPORTED BY MANY **FUNDERS,**
LOCAL AUTHORITIES, SCHOOLS AND PARTNERS THROUGHOUT THE YEAR INCLUDING:

ARTS AWARD ACCESS FUND

ARTS COUNCIL ENGLAND

BBC CHILDREN IN NEED

BEDFORDSHIRE POLICE & CRIME COMMISSIONER COMMUNITY SAFETY FUND

CENTRAL BEDFORDSHIRE LA

CREATIVE ACCESS

HOUGHTON REGIS TOWN COUNCIL

LUTON AIRPORT FUND

LUTON CULTURAL SERVICES TRUST

PEOPLE'S HEALTH TRUST

THE CRANFIELD TRUST

THE FRANK BRANSTON CHARITABLE TRUST

THE HARPUR TRUST

THE PANACEA FUND

THE PLACE — BEDFORD

THE WIXAMTREE TRUST

ROYAL OPERA HOUSE BRIDGE

TRINITY COLLEGE LONDON

FULL HOUSE THEATRE WOULD LIKE TO THANK ALL
THOSE THAT HAVE WORKED WITH US, SUPPORTED US
AND FUNDED US TO MAKE ALL THIS EXCITING WORK
HAPPEN DURING 2016/17.

FULL HOUSE THEATRE

16 CHURCH STREET, AMPHILL, BEDFORDSHIRE, MK45 2EH



01525 630 783



WWW.FULLHOUSE.ORG.UK



FULLHOUSETHEATRE



INFO@FULLHOUSE.ORG.UK



@FULLHOUSETHEACO

REGISTERED CHARITY NO. 1165541

**FULL
HOUSE**



LOTTERY FUNDED



Supported using public funding by

**ARTS COUNCIL
ENGLAND**



Central
Bedfordshire
Council



**Luton
Culture**

money raised by
health**Courage**
through



The Wixamtree Trust
Supporting the communities and people of Bedfordshire