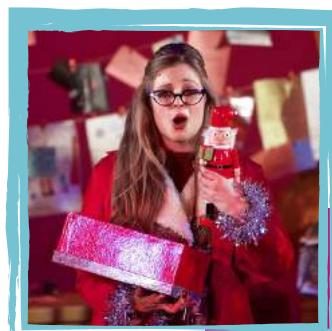


FULL HOUSE

ANNUAL REPORT
2019 / 2020



INTRODUCTION FROM OUR CHAIR

2019/20 WAS A YEAR OF PERFORMANCE, PARTICIPATION AND PARTNERSHIPS. THROUGH OUR PROJECTS WE REACHED A TOTAL OF 20,602 CHILDREN, YOUNG PEOPLE AND FAMILIES IN EVERY CORNER OF THE COMMUNITY.

WE'RE LEADING THE WAY, LOCALLY AND NATIONALLY, WITH OUR AUDIENCE-FOCUSED AND VISION-LED PRACTICE AND THIS REPORT GIVES AN OVERVIEW OF SOME OF THE WONDERFUL PROJECTS THAT OUR BRILLIANT TEAM HAVE DELIVERED IN THE LAST TWELVE MONTHS.

WE WOULD LIKE TO THANK EVERY CHILD, YOUNG PERSON AND GROWN UP WHO HAS TAKEN PART IN A PROJECT, SEEN A SHOW, WORKED WITH US, PROGRAMMED OUR WORK, COME TO A MEETING, FUNDED US AND HELPED US TO MAKE OUR WORK HAPPEN.

- PROFESSOR SALLY MACKEY



VISION

FOR EVERY **CHILD** TO HOLD TREASURED
MEMORIES OF THEATRE.



MISSION

WITH OUR AUDIENCE AT THE **HEART** OF OUR WORK WE CAREFULLY
CRAFT, PROGRAMME AND DEVELOP THEATRE AND PERFORMANCE
PROJECTS FOR, BY AND WITH CHILDREN AND YOUNG PEOPLE.

WE EXIST TO ENRICH YOUNG **CREATIVE** MINDS, DELIGHT YOUNG
AUDIENCES, AND NURTURE A LIFELONG CONNECTION WITH THE ARTS.

FULL HOUSE IS COMMITTED TO **LISTENING** AND RESPONDING
TO THE **NEEDS** OF OUR AUDIENCE, REACHING OUT TO ALL CORNERS
OF THE **COMMUNITY** TO CREATE LASTING **MEMORIES**.

THE YEAR IN NUMBERS



OUR PROJECTS REACHED
20,602 PEOPLE THIS YEAR

2,783 PEOPLE TOOK PART IN
WORKSHOPS AND **ACTIVITIES**

WE **WORKED** WITH **128** ARTISTS

THIS YEAR WE **PRESENTED**
150 LIVE **PERFORMANCES**

OUR **ARTS AWARD** CENTRES PASSED
18 **ARTS AWARD** **QUALIFICATIONS**

"This has been a fabulous year for us. We've worked with so many great people, made some great work and made a real difference to the lives of the young people we work with"
Harriet Hardie, Creative Director





ART TOWN

OUR **HOUGHTON REGIS** PROJECT REALLY IS WORTH **SHOUTING** ABOUT – CREATING **OPPORTUNITIES** FOR **DISADVANTAGED** CHILDREN, YOUNG PEOPLE AND FAMILIES. LOCATED IN CENTRAL BEDFORDSHIRE, THE TOWN HAS NO **TRADITIONAL** ARTS INFRASTRUCTURE AND LIMITED **CREATIVE OPPORTUNITIES** OR ACCESS TO THE ARTS.

WE RUN YOUTH **CREATIVE** SESSIONS, ARTS EVENTS IN **COMMUNITY** SPACES AND NOW **ART TOWN TOTS** SESSIONS FOR THE **VERY YOUNG.**

OVER **1,820** PEOPLE **TOOK PART** IN ART TOWN **ACTIVITIES** THIS YEAR.

"[Art Town] offers the chance to explore a variety of artistic skills in an area which has little other opportunities for young people...it has changed my life"

"[my children] have thrived and I'm certain that without it they would not be doing as well in life...it has really helped them both"







WHO IS BEDFORD?

FUNDED BY THE NATIONAL LOTTERY HERITAGE FUND, OUR NEW
INTERACTIVE MUSEUM **EXPERIENCE** WHO IS BEDFORD? LANDED IN
SCHOOLS AND **COMMUNITY** VENUES IN BEDFORD IN THE **SPRING**,
REACHING OVER **740** CHILDREN.

THE PIECE IS A **FUN** CELEBRATION OF THE TOWN'S **DIVERSITY** AND **CULTURAL**
HERITAGE, MADE IN **PARTNERSHIP** WITH **THE HIGGINS** MUSEUM IN BEDFORD.
THE PROJECT WILL BE TAKING TO THE ROAD AGAIN LATER IN **2020**.

*"This was an amazing, immersive, engaging
experience for the children today"*
Bedford Road School

*"An amazing experience.
Interactive, clever and fun"*
Audience member

JACK AND THE BEANSTALK

THIS **YEAR** WE COMPLETED OUR 'STEPPING STONES' PROJECT – WHICH AIMED TO DEVELOP **FAMILY** AND SCHOOL AUDIENCES. THE ACTIVITY WAS SUPPORTED BY ARTS COUNCIL ENGLAND'S **STRATEGIC TOURING** FUND.

THE SHOW WAS SEEN BY **2,891** PEOPLE.

FULL OF BEANS

A **COMPANION** SHOW TO JACK AND THE BEANSTALK DEVELOPED FOR SCHOOLS, LIBRARIES AND COMMUNITY SETTINGS, FROM **SUFFOLK TO YORKSHIRE**, WHERE WE REACHED NEW AUDIENCES AND MANY OF THE FAMILIES ENJOYED THEIR **FIRST** THEATRE **EXPERIENCE** IN THE FAMILIAR ENVIRONMENT OF THEIR LIBRARY.

WE REACHED AN AUDIENCE OF **2,461** CHILDREN AND THEIR FAMILIES.







*"Touched upon real issues
experienced by people of colour"
Audience member*

LOST PROPERTY

MAKING **WORK** FOR AND WITH OUR **AUDIENCE**
IS REALLY **IMPORTANT** TO US AND THAT'S WHY,
IN **PARTNERSHIP** WITH SPARK ARTS,
LUTON CULTURE AND ARTS COUNCIL ENGLAND, WE
COMMISSIONED EMERGING BRITISH ASIAN WRITER
YASMEEN KHAN TO WRITE LOST PROPERTY,
A NEW PLAY FOR **YOUNG AUDIENCES**, TO REFLECT THE
CONTEMPORARY LIFE OF BRITISH ASIAN CHILDREN.





DEVELOPED IN **CLASSROOMS**
WITH CHILDREN IN LUTON THE
QUIRKY **DETECTIVE** STORY
WAS HUMOROUS AND POIGNANT AND
FURTHERED OUR **AMBITIONS** AROUND
INCLUSIVITY AND DIVERSITY.

MUSICAL **COLLABORATION** WITH
FAZ SHAH GAVE THE PIECE A FURTHER
AUTHENTIC BRITISH ASIAN VOICE.

THE **TOUR** TOOK PLACE IN SCHOOLS AND
COMMUNITY VENUES IN **LUTON AND**
LEICESTER. **980** CHILDREN SAW THE SHOW.

"Charming and brilliantly acted"
Audience member

FESTIVALS

DURING 2019/20 WE PRODUCED
THREE FESTIVALS: LUTON'S FEB FEST,
MEADOWLANDS AND HOUGHTON REGIS
HULLABALOO, BRINGING CULTURAL **ACTIVITIES**
AND **OPPORTUNITIES** TO **2,393**
CHILDREN, YOUNG PEOPLE AND FAMILIES IN
LUTON AND HOUGHTON REGIS.

A **FEB FEST** PROGRAMME
HIGHLIGHT WAS **FOUR GO WILD IN WELLIES**
BY INCLUSIVE DANCE ENSEMBLE
INDEPEN-DANCE. THE FOCUS THIS YEAR
WAS **PARTICIPATION**, WITH **295**
PEOPLE TAKING PART IN **WORKSHOPS**.



©FULL HOUSE THEATRE



©JANNE-MARIE ABBATE



©FULL HOUSE THEATRE



MEADOWLANDS

'POP UP' FESTIVAL AT HOUGHTON HALL PARK
SAW 497 PEOPLE WATCH AND TAKE PART
IN ARTS ACTIVITIES OVER TWO DAYS.

HOUGHTON REGIS

HULLABALOO

WAS AN EXPLOSION OF SOME OF THE
BEST OUTDOOR ARTS FROM THE UK AND
BEYOND. MY HOUSE BY APOCALYPTIC
CIRCUS AND LOOK UP FROM HIKAPEE
GAVE NEARLY 1,000 PEOPLE THE
CHANCE TO BE INSPIRED BY LIVE ART IN
THE HEART OF THEIR COMMUNITY.

"I've seen this sort of thing in London
before but never in Houghton Regis. It's brilliant,
brings all the community together"
Audience Member



©FULL HOUSE THEATRE

©FULL HOUSE THEATRE

©CONTEMPORARY



OUR SMALL SCALE **PUPPETRY** AND STORYTELLING SHOW

BY THE LIGHT OF THE MOON

REACHED A NEW AUDIENCE OF **YOUNG** PEOPLE.

OVER TWO **MONTHS** WE DELIVERED **45** PERFORMANCES OF THE SHOW TO
5,582 CHILDREN IN **BEDFORDSHIRE, THURROCK** AND **LONDON**.

16

"Fantastic performance rich in language and story that all children can relate to. The children will treasure this experience" Livingstone Primary School

THE NIGHT BEFORE CHRISTMAS

ORIGINALLY PRODUCED IN **LUTON** IN
2016, WE TOOK OUR **INVENTIVE**
ADAPTATION OF THE **FAVOURITE** POEM
TO NEW AUDIENCES IN **BARNESLEY** AND
LEIGHTON BUZZARD.

"Exceptionally well written and performed"
Ian Morley, The Civic, Barnsley

2,785 CHILDREN AND
FAMILIES SAW THE **SHOW.**

*"Very imaginative, fun, amazing and
magical - Happy memories. Thank you!"*
Audience Member



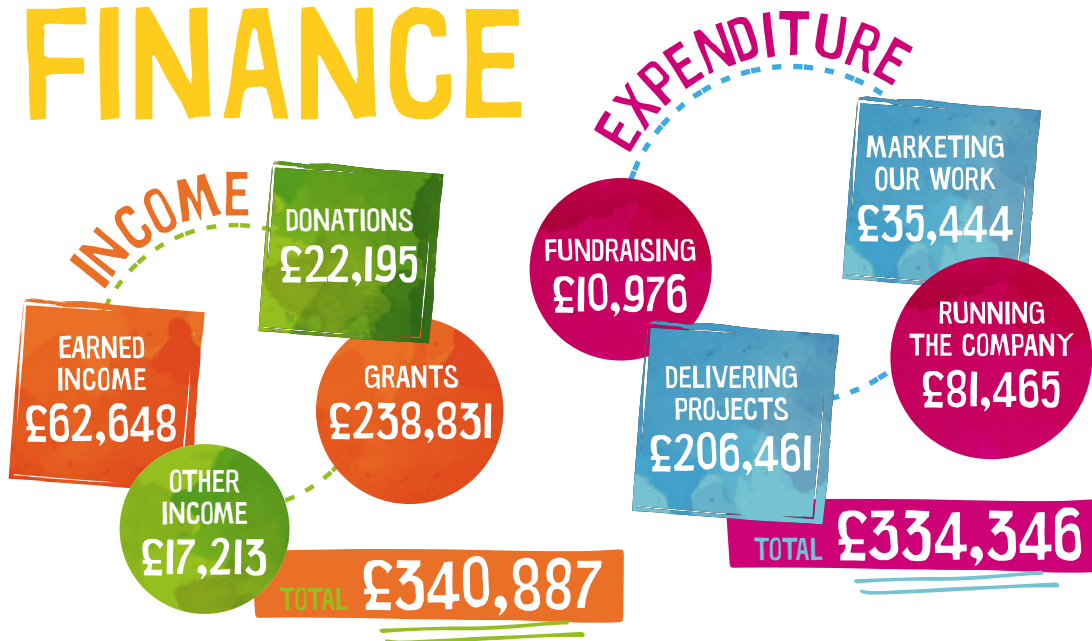
THE GIANT, THE PHOENIX & THE FAERIE QUEEN

THANKS TO **FUNDING** FROM THE
HARPUR TRUST AND THE BOSHIER HINTON
FOUNDATION WE SPENT **TWO MONTHS**
WORKING WITH **12 YOUNG ADULTS**
FROM **RIDGEWAY SPECIAL SCHOOL** TO CREATE
THEIR OWN LIVE **PERFORMANCE**. THE
COMPANY HAD THE **OPPORTUNITY** TO WORK
WITH **DANCE ARTISTS**, A **FILMMAKER**
AND A **BAFTA NOMINATED COMPOSER** AND
EVERYONE GAINED AN **ARTS AWARD!**

*"The whole group were full to the brim with
pride and excitement"* Workshop leader



FINANCE



WE HAVE BEEN GENEROUSLY **SUPPORTED** BY MANY FUNDERS,

LOCAL AUTHORITIES, SCHOOLS AND PARTNERS THROUGHOUT THE YEAR INCLUDING:

Luton Culture

money raised by
health**Courage**
through



Supported using public funding by
ARTS COUNCIL ENGLAND



giftaid it



FOYLE FOUNDATION



FULL HOUSE THEATRE WOULD LIKE TO **THANK**
 ALL THOSE THAT HAVE **WORKED** WITH US, **SUPPORTED**
 US AND **FUNDED** US TO MAKE ALL THIS EXCITING
 WORK **HAPPEN** DURING **2019/20**.

FULL HOUSE THEATRE

12 KINGS ARMS YARD, AMPHILL,
BEDFORDSHIRE, MK45 2PJ



01525 630 783



WWW.FULLHOUSE.ORG.UK



[FULLHOUSETHEATRE](https://www.facebook.com/FULLHOUSETHEATRE)



INFO@FULLHOUSE.ORG.UK



[@FULLHOUSETHEACO](https://twitter.com/FULLHOUSETHEACO)



[@FULLHOUSETHEATRE](https://www.instagram.com/FULLHOUSETHEATRE)

PHOTO CREDITS THROUGHOUT ARE © SHAUN ARMSTRONG/MUBSTA.COM UNLESS STATED OTHERWISE.

